

GENERAL			
Operational Hours			
ATS Hours: H24			
AD ADMIN Hours: MON-FRI 0400-1200 SAT, SUN, HOL CLSD			
Airport Information			
RFF:	CAT 7		
Fuel:	0030-1630		
PCN:	RWY 09: 0-2210m / 0-7250ft: 70/F/C/W/T, 2210-2742m / 7250-8996ft: 70/R/C/W/T RWY 27: 0-532m / 0-1745ft: 70/R/C/W/T, 532-2742m / 1745-8996ft: 70F/C/W/T		
Customs:	24HR PPR for non-scheduled ACFT.		
Operation			
Low Visibility Procedure			
LVP in force when:			
- Either the TDZ or MID RVR is below 800m or the cloud ceiling is below 200ft, and			
- SP has been completed and the AD is safeguarded			
Surface Movement Guidance and Control System (SMGCS) in use when LVP activated.			
Report RWY vacated when ACFT is clear of the ILS sensitive area.			
LVP taxi routes:			
After landing on RWY 27 vacate via TWY C, then taxi to stands 11-14.			
For departure taxi to CAT II/IIIA/IIIB holding position RWY 27 via TWY C from stands 11-14.			
During CAT II conditions and when RVR below 550m, follow-me O/R for arriving/departing ACFT.			
Warnings			
Do not mistake Lucknow with Bakshika-Talab AD located 13.3NM of 003° RWY orientation 09/27.			
ARRIVAL			
Speed			
MAX IAS 250KT below 10000ft.			
MAX IAS 220KT below 10000ft within D15 LLK VOR/DME.			
DEPARTURE			
Take-off Minima			
RWY		27	
All ACFT	ft - m/km	0 - 125R	For conditions check CRAR India
RWY		09	
All ACFT	ft - m/km	0 - 400V	For conditions check CRAR India
Speed			
MAX IAS 250KT below 10000ft.			

Changes: OPS Hours, OPS, TKOF MIN, AD INFO

THIS CHART IS A PART OF NAVIGRAPH CHARTS AND IS INTENDED FOR FLIGHT SIMULATION USE ONLY

GENERAL

Operational Hours

ATS Hours: H24

AD ADMIN Hours:

MON-FRI 0400-1200

SAT, SUN, HOL CLSD

Airport Information

RFF: CAT 7

Fuel: 0030-1630

PCN: RWY 09: 0-2210m / 0-7250ft: 70/F/C/W/T, 2210-2742m / 7250-8996ft: 70/R/C/W/T
RWY 27: 0-532m / 0-1745ft: 70/R/C/W/T, 532-2742m / 1745-8996ft: 70F/C/W/T

Customs: 24HR PPR for non-scheduled ACFT.

Operation

Low Visibility Procedure

LVP in force when:

- Either the TDZ or MID RVR is below 800m or the cloud ceiling is below 200ft, and
- SP has been completed and the AD is safeguarded

Surface Movement Guidance and Control System (SMGCS) in use when LVP activated.

Report RWY vacated when ACFT is clear of the ILS sensitive area.

LVP taxi routes:

After landing on RWY 27 vacate via TWY C, then taxi to stands 11-14.

For departure taxi to CAT II/III/IIIB holding position RWY 27 via TWY C from stands 11-14.

During CAT II conditions and when RVR below 550m, follow-me O/R for arriving/departing ACFT.

Warnings

Do not mistake Lucknow with Bakshika-Talab AD located 13.3NM of 003° RWY orientation 09/27.

ARRIVAL

Speed

MAX IAS 250KT below 10000ft.

MAX IAS 220KT below 10000ft within D15 **LLK VOR/DME**.

DEPARTURE

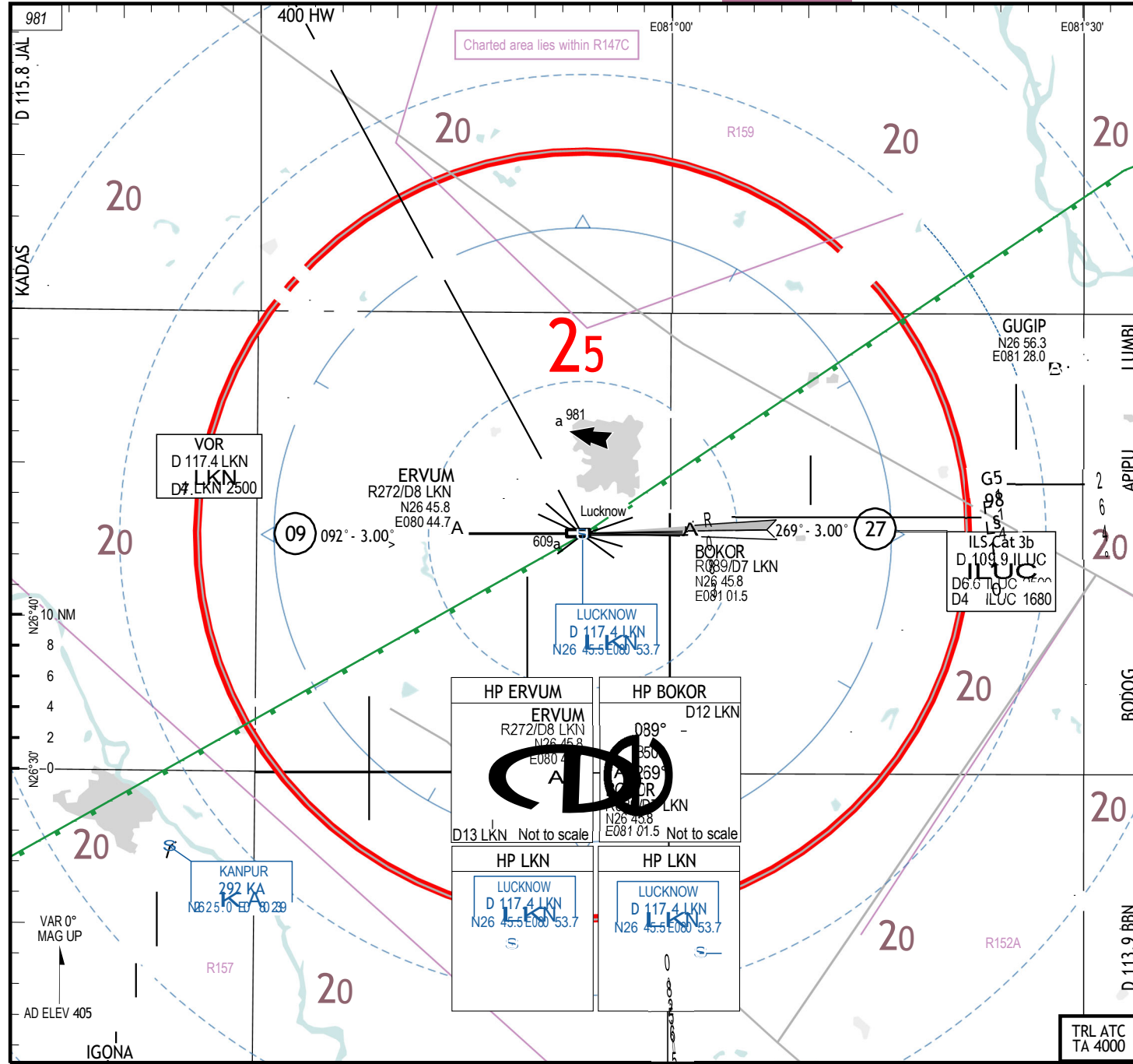
Take-off Minima

RWY		27	
All ACFT	ft - m/km	0 - 125R	For conditions check CRAR India
RWY		09	
All ACFT	ft - m/km	0 - 400V	For conditions check CRAR India

Speed

MAX IAS 250KT below 10000ft.

2-10



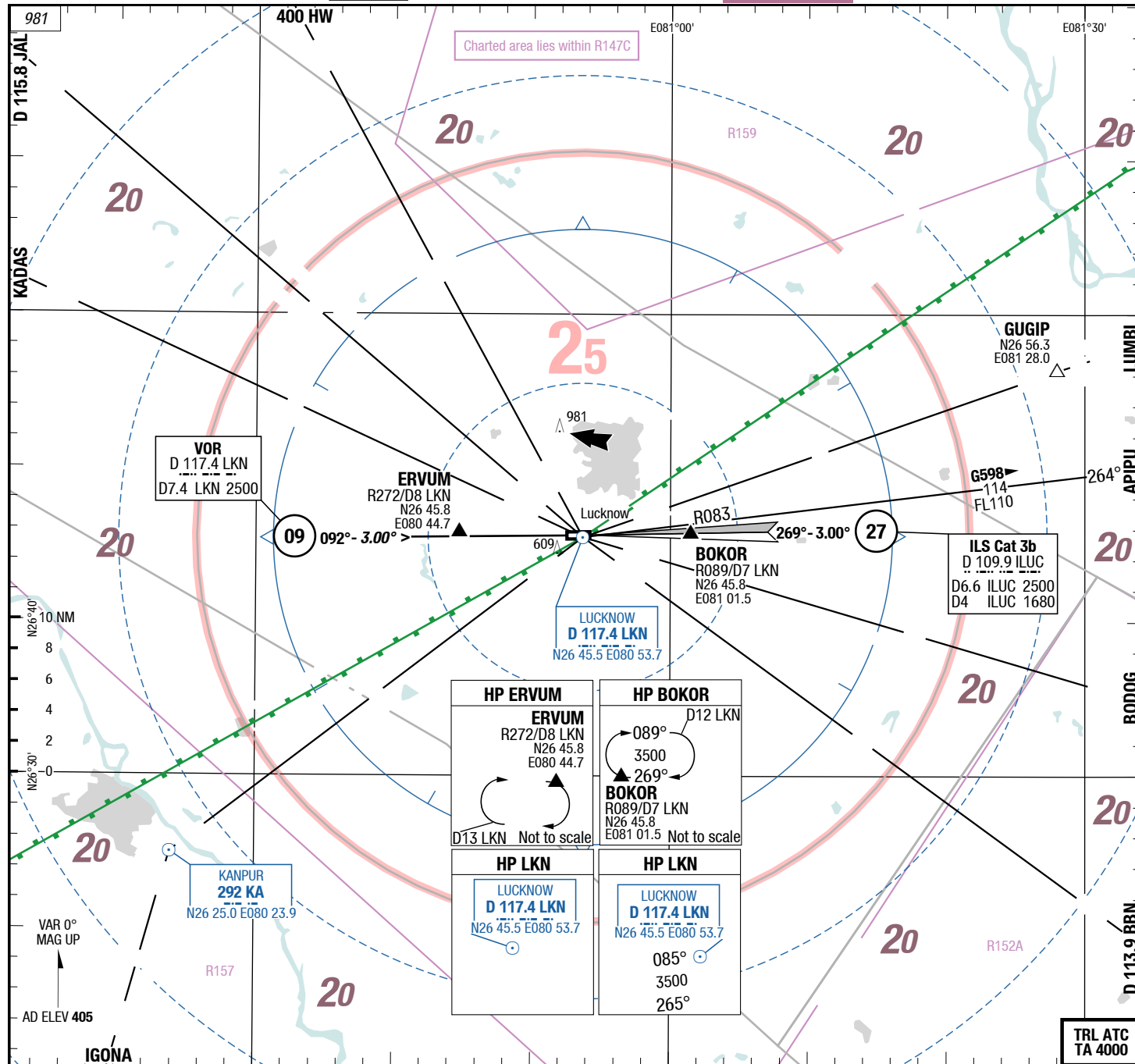
ATIS	126.800
CTL	120.450 0230-1430
APP	120.450
TWR	118.600

Landing RWY system:

09: 157 x 45, 2585 x 45, 60 HL, 420, THR 405 (15hPa) / TDZ 405 (---%) 0.0%

27: 45 x 2742, 60 HL, 3.0°, TDZ 403 (---%) / THR 399 (15hPa) HL-P2

2-10



ATIS 126.800
 CTL 120.450 0230-1430
 APP 120.450
 TWR 118.600

Landing RWY system:

09
 420
 HL-S THR 405 (15hPa) / TDZ 405 (---%) 0.0%

60 HL
 45 x 2742
 3.0°
 0.0% TDZ 403 (---%) / THR 399 (15hPa) HL-P2 27

Changes: APL, ASP, OBST, APCH boxes, AD ELEV, Editorial

3-20

E080°52.5'

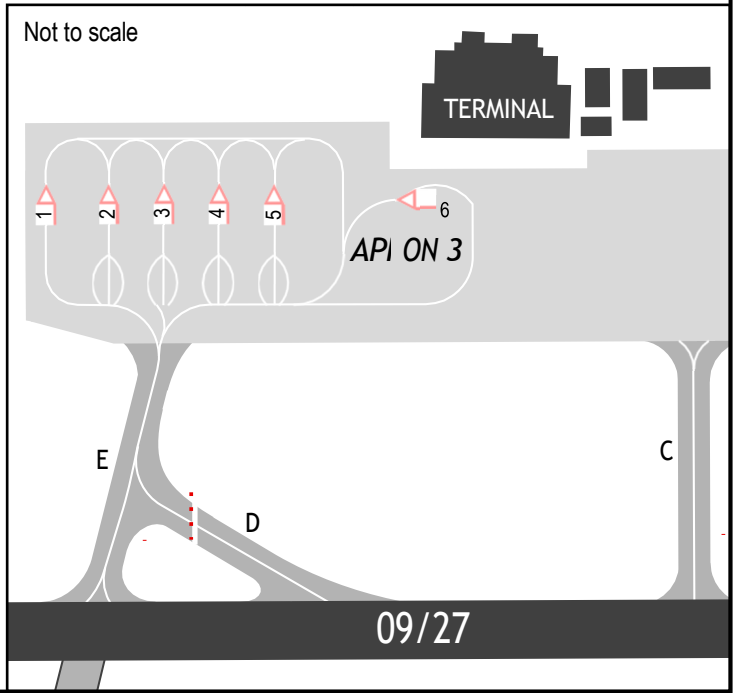
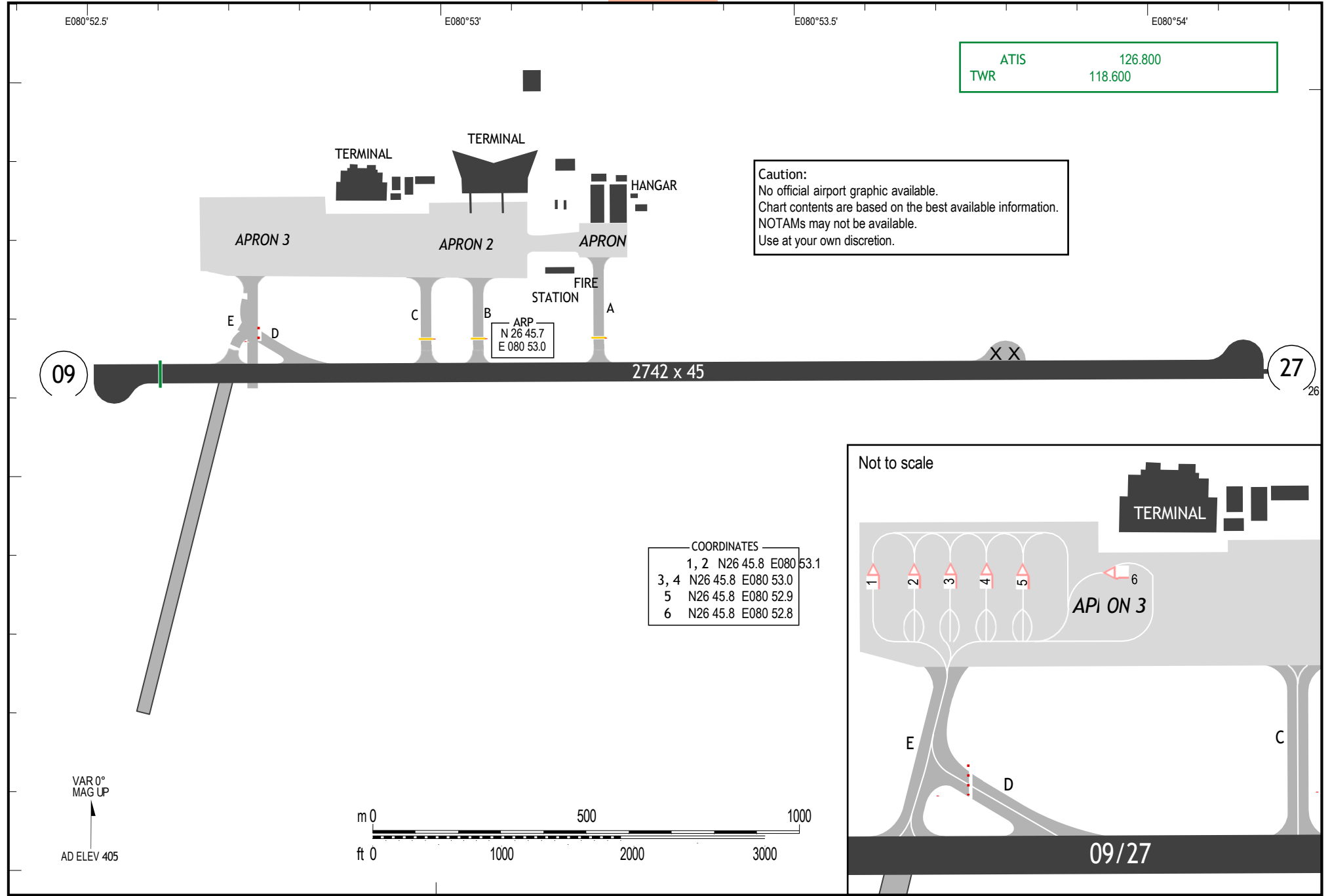
E080°53'

E080°53.5'

E080°54'

ATIS	126.800
TWR	118.600

Caution:
 No official airport graphic available.
 Chart contents are based on the best available information.
 NOTAMS may not be available.
 Use at your own discretion.



3-20

E080°52.5'

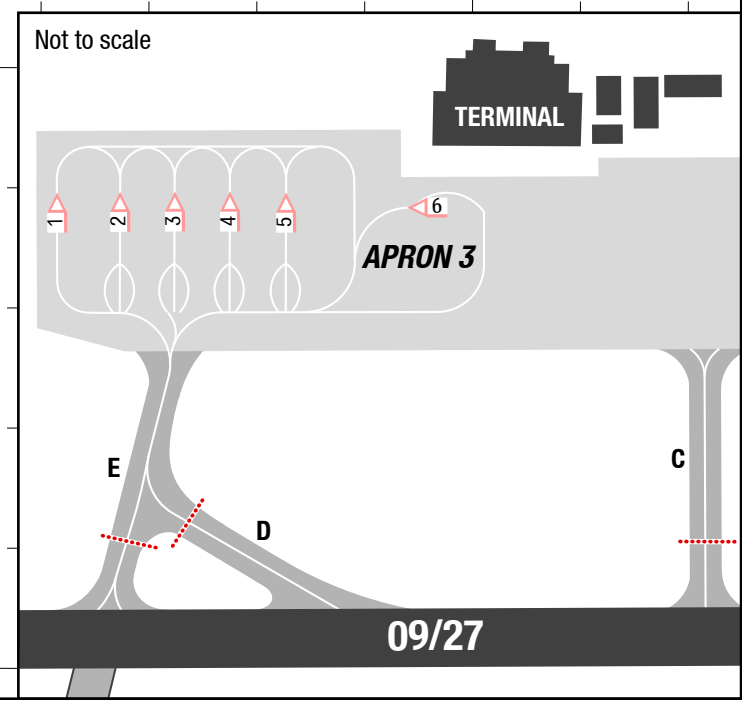
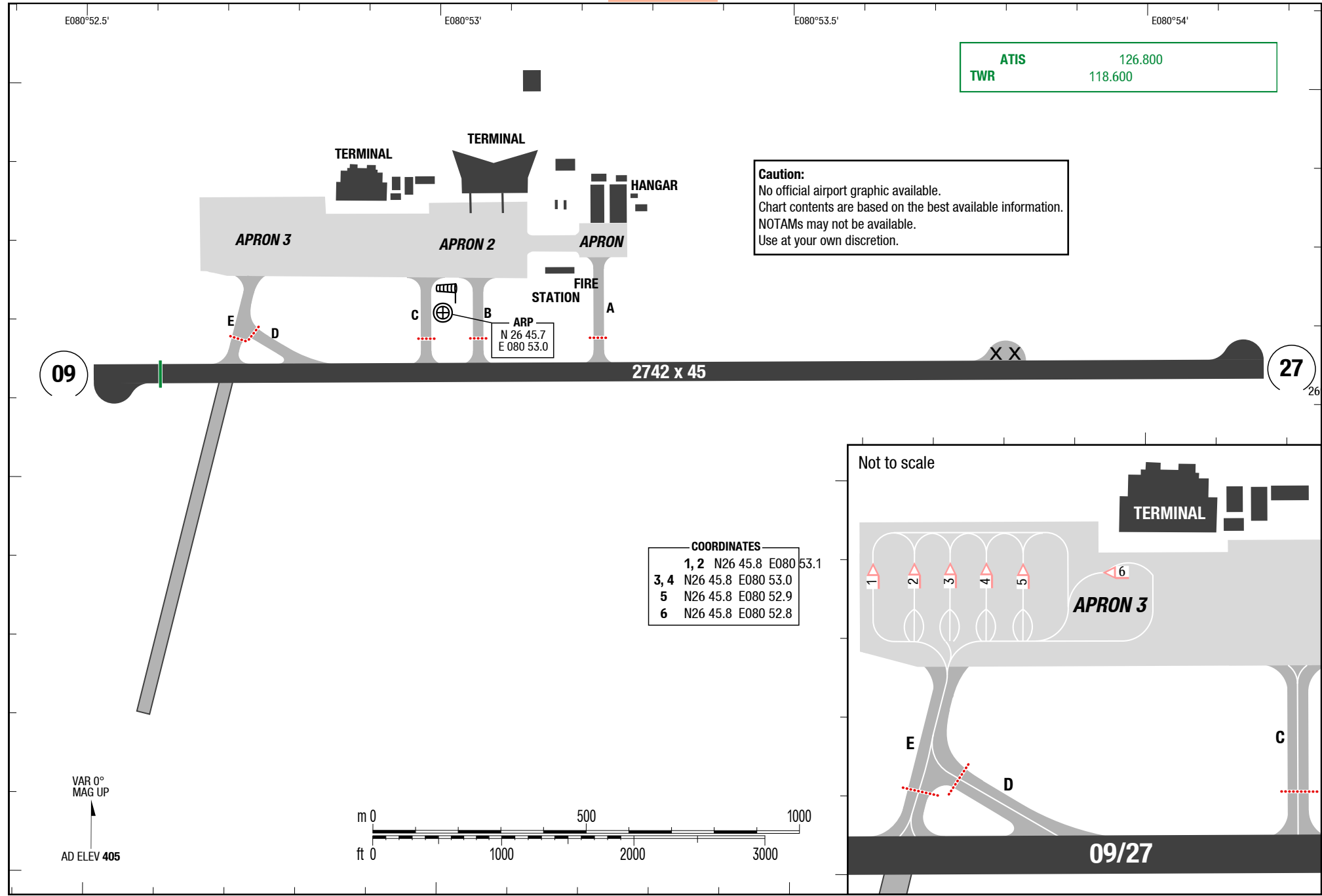
E080°53'

E080°53.5'

E080°54'

ATIS	126.800
TWR	118.600

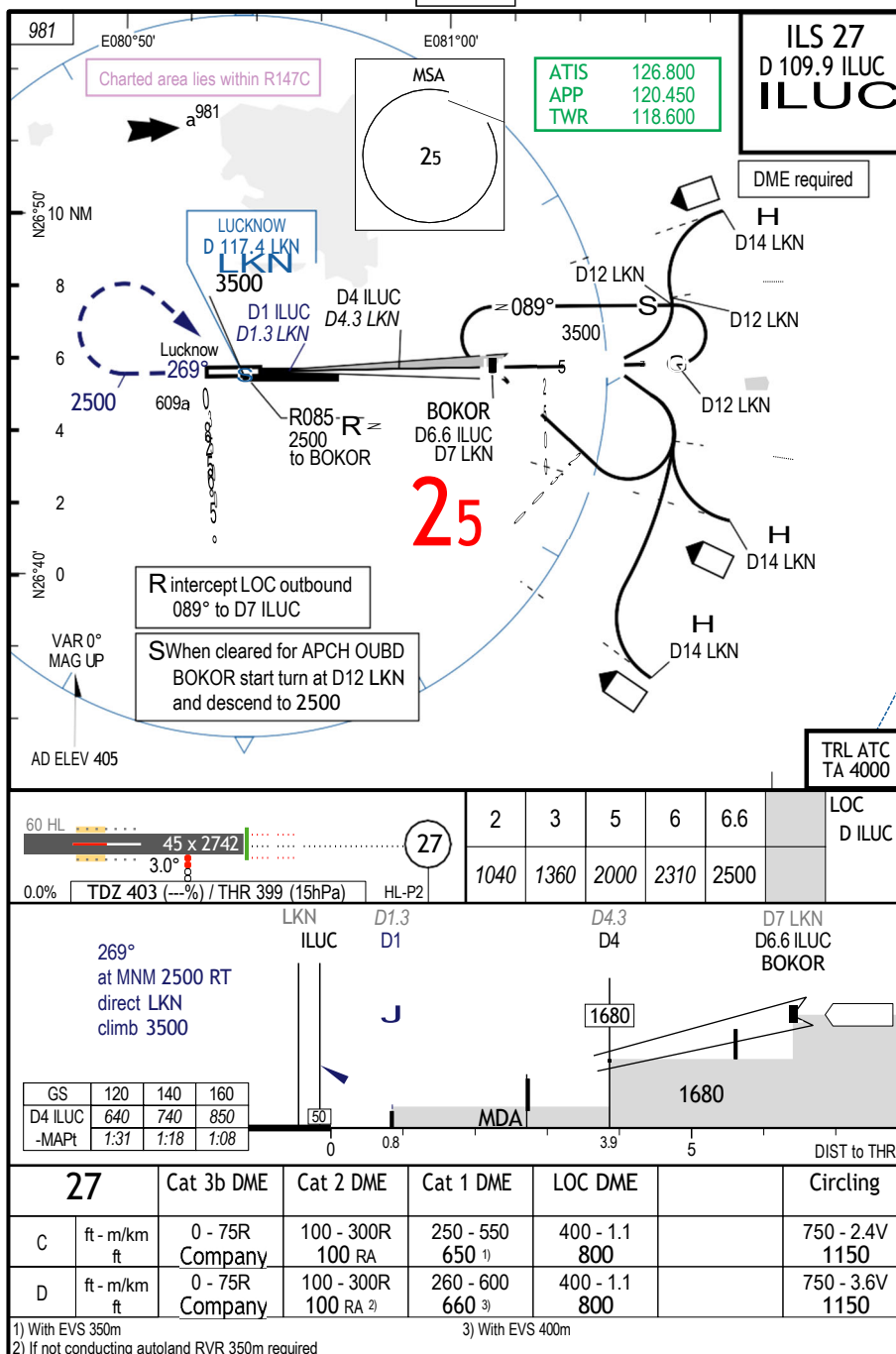
Caution:
 No official airport graphic available.
 Chart contents are based on the best available information.
 NOTAMs may not be available.
 Use at your own discretion.



LKO-VILK

7-10

ILS 27



Changes: Completely revised

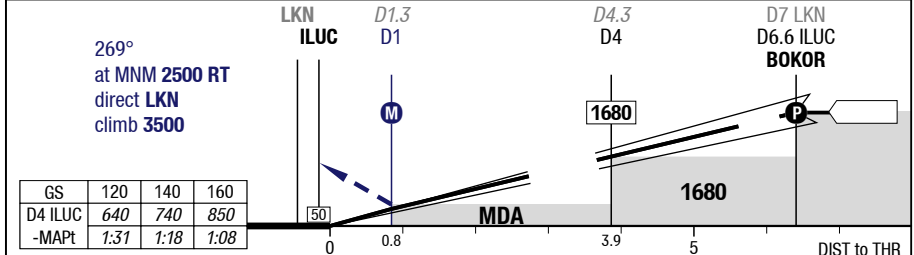
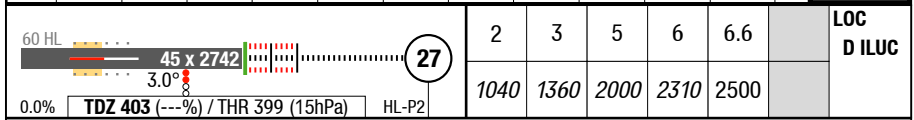
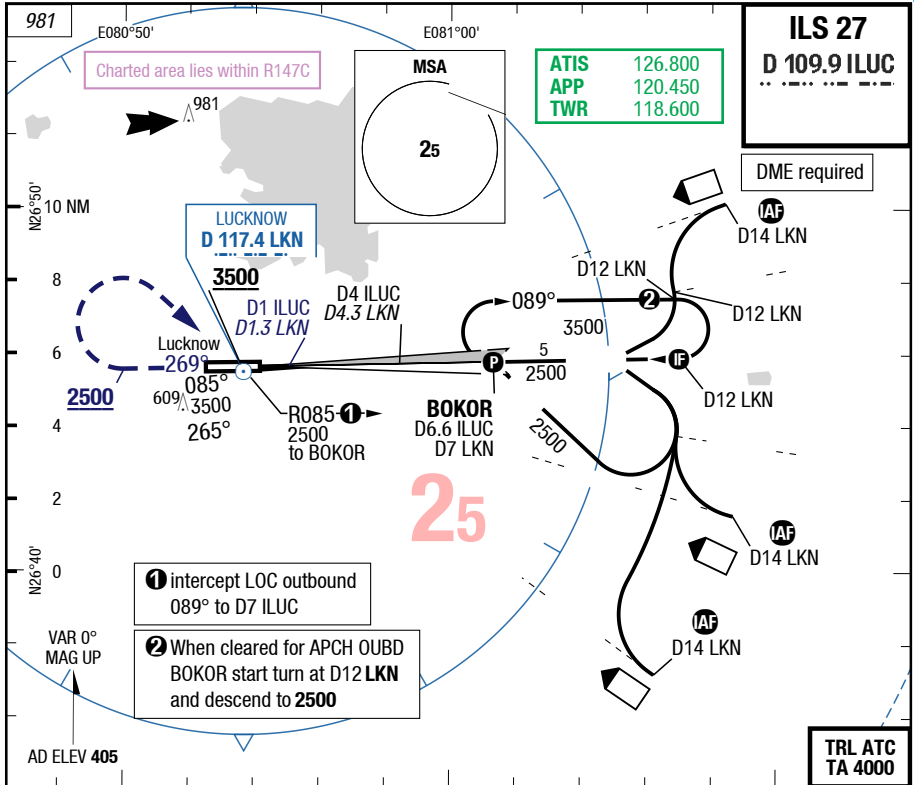
THIS CHART IS A PART OF NAVIGRAPH CHARTS AND IS INTENDED FOR FLIGHT SIMULATION USE ONLY

01-DEC-2016

LKO-VILK

7-10

ILS 27



27	Cat 3b DME	Cat 2 DME	Cat 1 DME	LOC DME	Circling	
						C
	ft - m/km ft	Q - 75R Company	100 - 300R 100 RA	250 - 550 650 ¹⁾	400 - 1.1 800	750 - 2.4V 1150
	ft - m/km ft	Q - 75R Company	100 - 300R 100 RA ²⁾	260 - 600 660 ³⁾	400 - 1.1 800	750 - 3.6V 1150

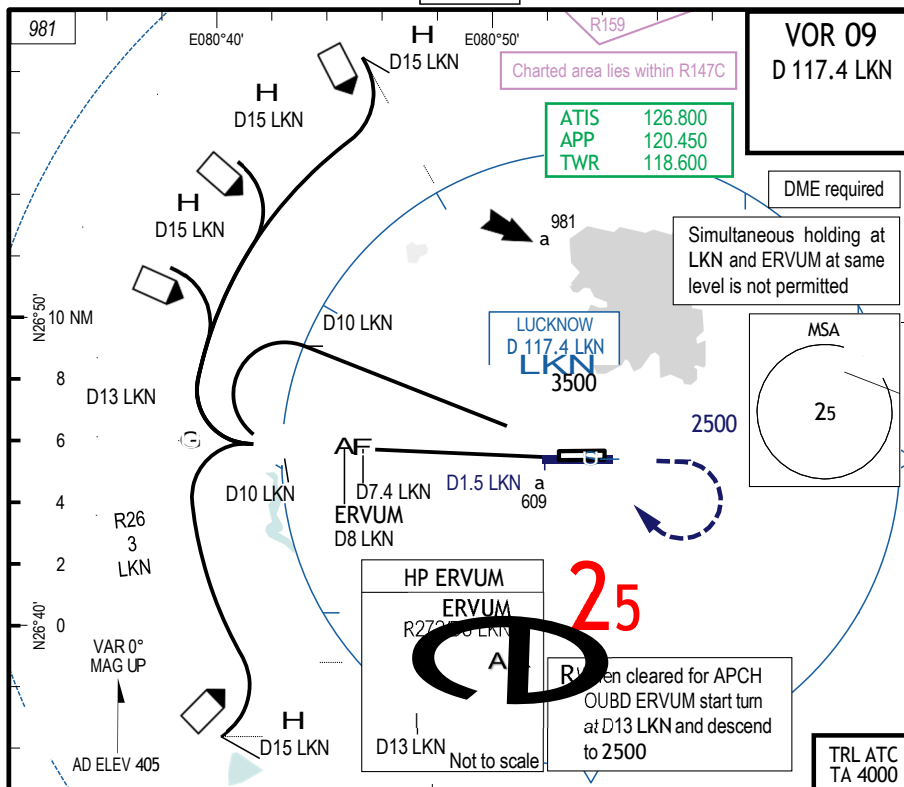
1) With EVS 350m
2) If not conducting autoland RVR 350m required
3) With EVS 400m

Changes: Completely revised

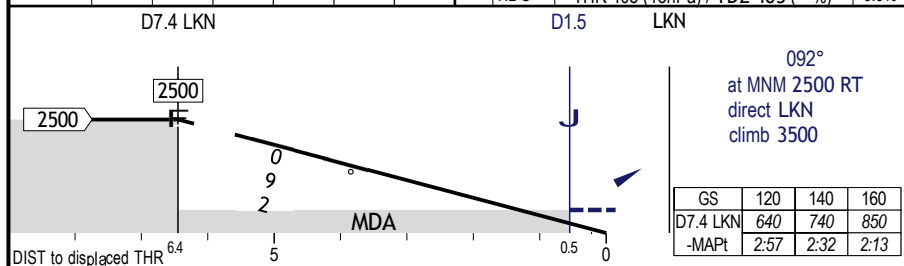
LKO-VILK

7-20

VOR 09



3.00° D LKN	7.4	7	6	5	4	3	09	157 2585 x 45	60 HL
092° RWY 089°	2500	2380	2060	1740					



09	VOR DME						Circling
C	ft - m/km ft	430 - 1.6 830					750 - 2.4V 1150
D	ft - m/km ft	430 - 1.6 830					750 - 3.6V 1150

Changes: MIN, ALT, APL, OBST, Profile, MISAP text, AD ELEV

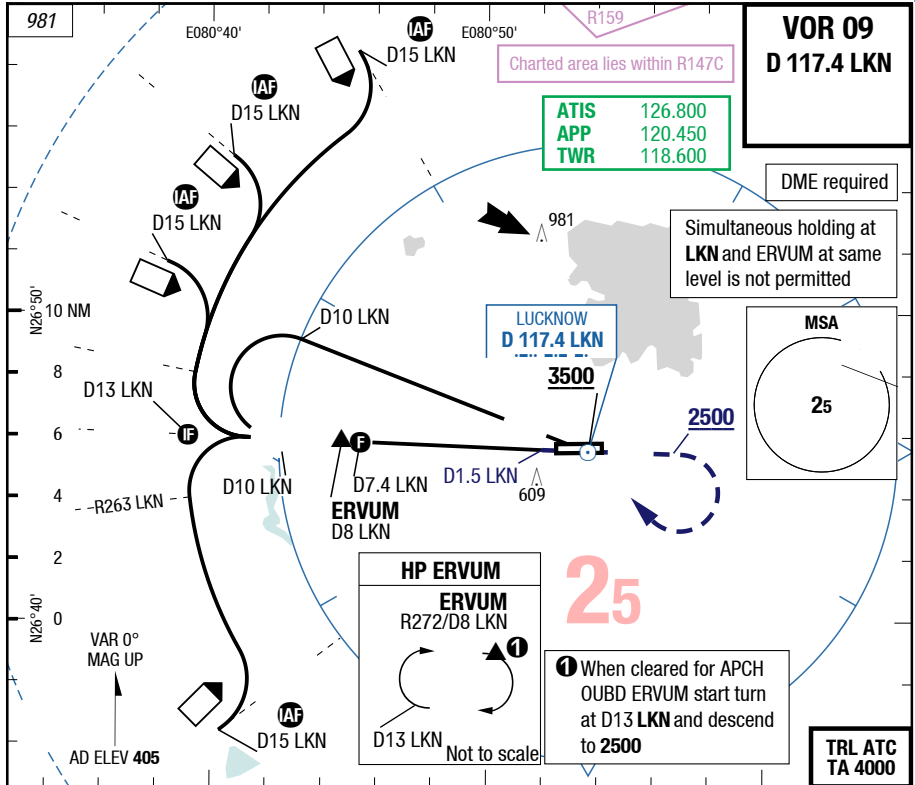
THIS CHART IS A PART OF NAVIGRAPH CHARTS AND IS INTENDED FOR FLIGHT SIMULATION USE ONLY

01-DEC-2016

LKO-VILK

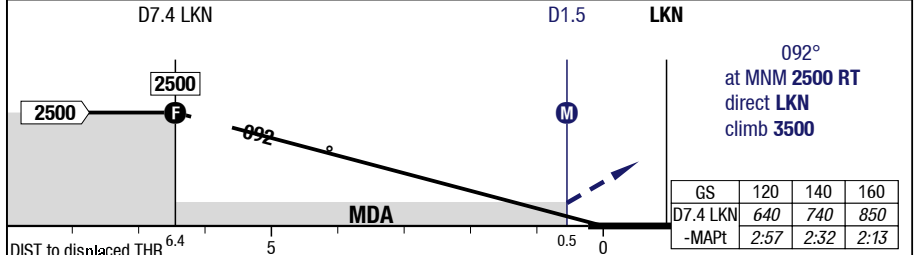
7-20

VOR 09



3.00° D LKN	7.4	7	6	5	4	3	09 HL-S	
092° RWY 089°	2500	2380	2060	1740	1420	1110		

THR 405 (15hPa) / TDZ 405 (---%) 0.0%



09	VOR DME					Circling	
	C	ft - m/km ft	430 - 1.6 830				750 - 2.4V 1150
D	ft - m/km ft	430 - 1.6 830					750 - 3.6V 1150

Changes: MIN, ALT, APL, OBST, Profile, MISAP text, AD ELEV

THIS CHART IS A PART OF NAVIGRAPH CHARTS AND IS INTENDED FOR FLIGHT SIMULATION USE ONLY

以上内容仅为本文档的试下载部分，为可阅读页数的一半内容。如要下载或阅读全文，请访问：<https://d.book118.com/827116064043006026>