

SPECIFICATION FOR LCD MODULE

Model No. TM10032ACCWG

Prepared by:	Date:
Checked by :	Date:
Verified by :	Date:
Approved by:	Date:

TIANMA MICROELECTRONICS CO., LTD

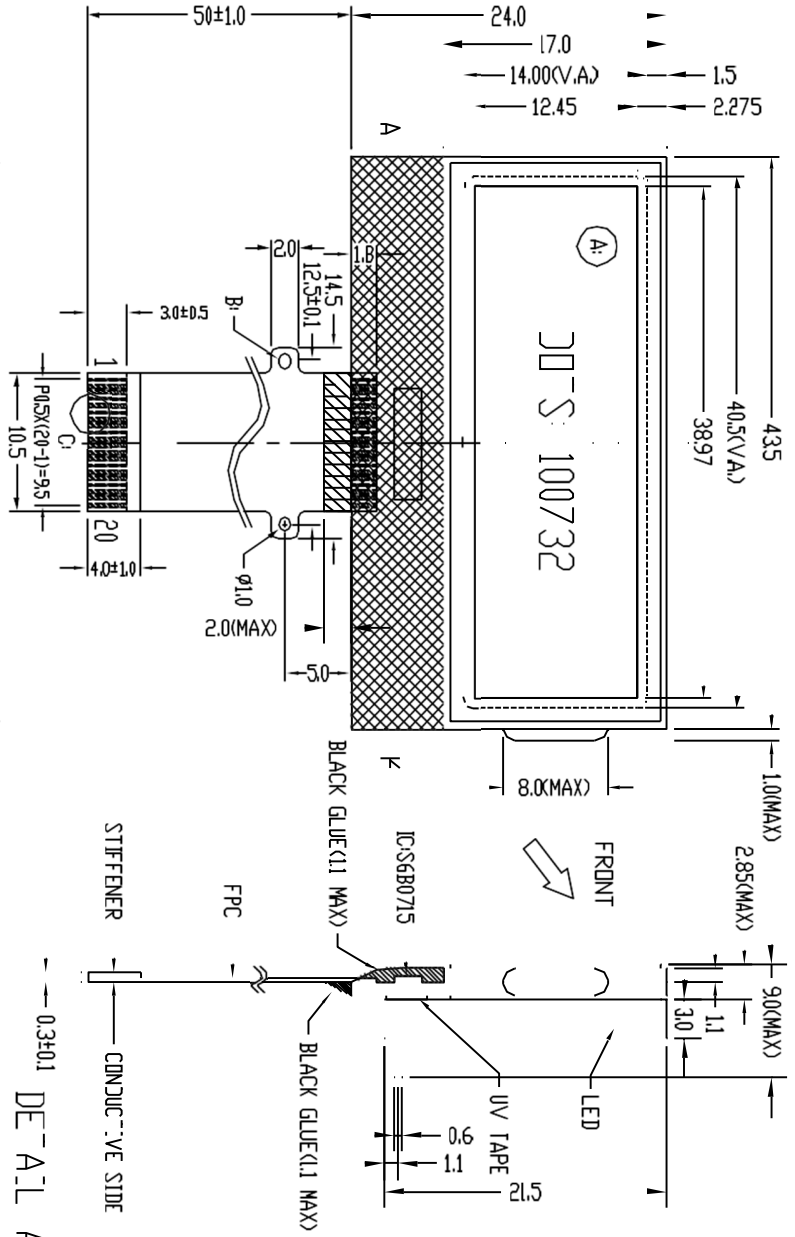
REVISION RECORD

Date	Ref. Page	Revision No.	Revision Items	Check & Approval

1. General Specifications:

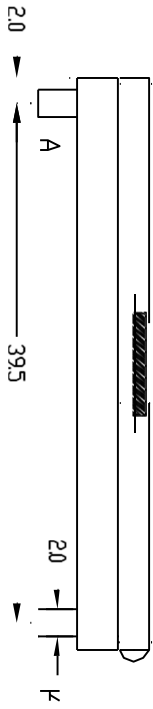
- 1.1 Display type: FSTN
- 1.2 Display color*:
 - Display color: Blue-Black
 - Background: White*
- 1.3 Polarizer mode: Transflective/Positive
- 1.4 Viewing Angle: 6:00
- 1.5 Driving Method: 1/32Duty 1/6 Bias
- 1.6 Lcd operation voltage: 7.0V Vdd=3.0V
- 1.7 Backlight: Yellow-green LED type
- 1.8 Controller: S6B0715A11-B0CZ
- 1.9 Data Transfer: Serial
- 1.10 Operating Temperature: -20----+60°C
 - Storage Temperature: -30----+70°C
- 1.11 Outline Dimensions: Refer to outline drawing on next page
- 1.12 Dot Matrix: 100 X 32
- 1.13 Dot Size: 0.36X0.36(mm)
- 1.14 Dot Pitch: 0.39X0.39 (mm)
- 1.15 Weight: 20g

* Color tone is slightly changed by backlight, temperature and driving voltage.

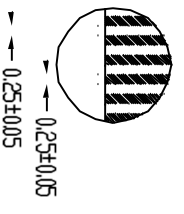


1	V4
2	V3
3	V2
4	V1
5	V0
6	VR
7	C2-
8	C2+
9	C1-
10	C1+
11	C3+
12	VOUT
13	VSS
14	STD
15	SCLK
16	VDD
17	RS
18	CS1B
19	RESETB
20	NC

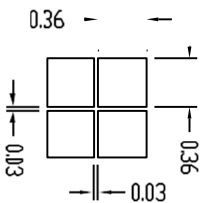
DETAIL C



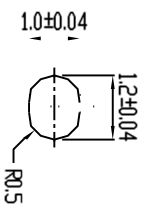
- NOTES:
1. DISPLAY TYPE: FSTN 6400
 2. VIEWING DIRECTION: PANSLFLEC:VE/PDS:VE
 3. POLARIZER MODE: 30V
 4. LOGIC VOLTAGE: 3.0V
 5. LCD OPERATING VOLTAGE: 7.0V
 6. DRIVE METHOD: 1/32 DUTY 1/6 BIAS
 7. OPERATING TEMP: -20°C-170°C
 8. STORAGE TEMP: -30°C-160°C
 9. CON POLAR: S630715A1-30C2(KS0715UN+10CC)
 10. BACKLIGHT: LEXYELLDV-BPEEN(A1V)
 11. UNMARKED TOLERANCES: ±0.3mm
 12. CONNECT: FPC



DETAIL A



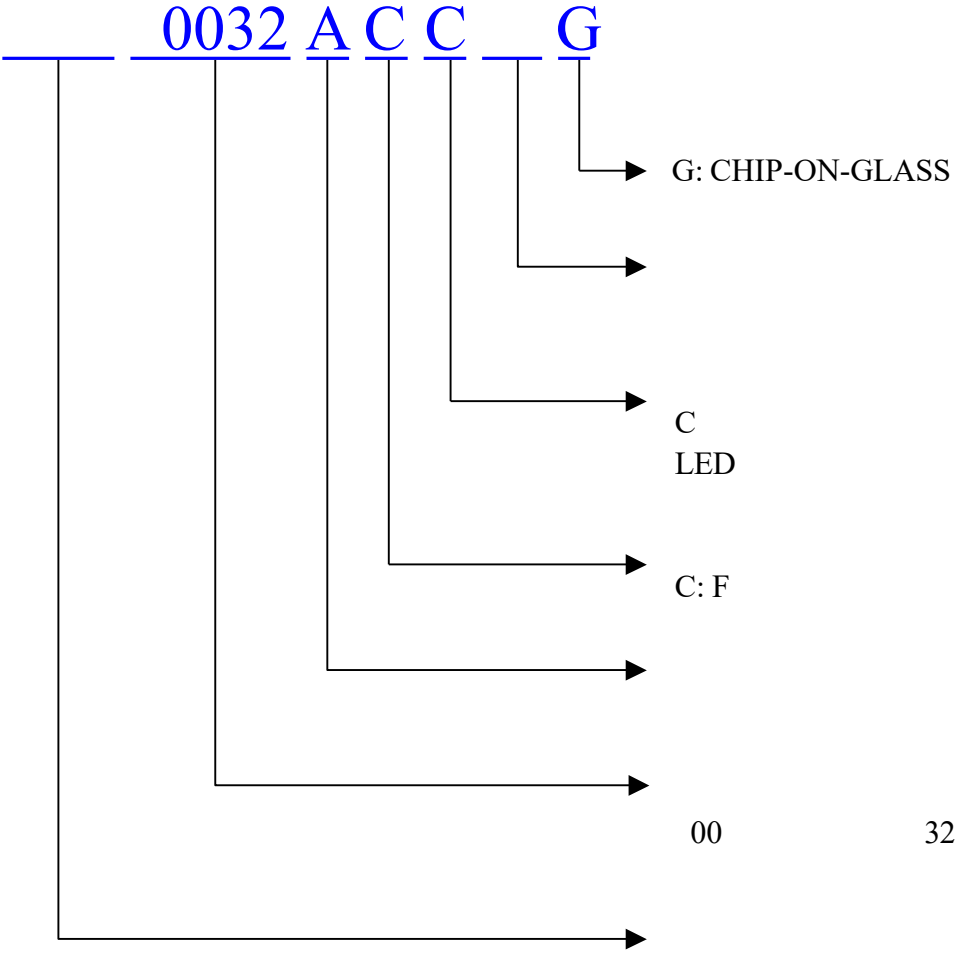
DETAIL B



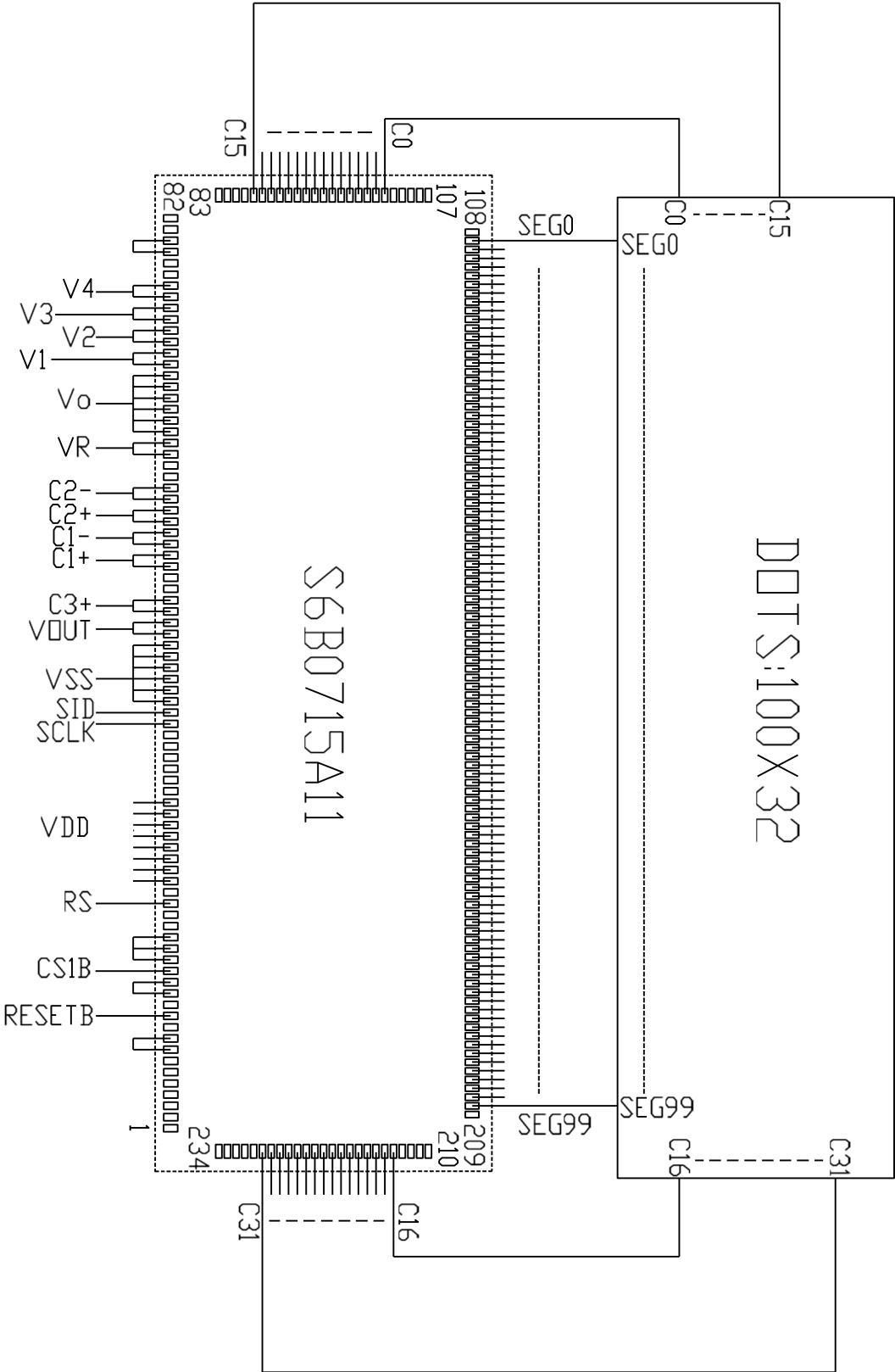
TIAN-MA MICROELECTRONICS CO.

22/F., HANGSHU Bui liding, Shenzhen Road, Central, Shenzhen, China

DRAWN BY:	TITLE: M10032ACCWG	SCALE:	1:1
CHECKED BY:	DWG NO: G-1	DATE:	2011
APPROVED BY:	DWG NAME: M10032ACCWG-1	SHEET NO:	07
CONFIRMED BY:			



4 Circuit Block Diagram



以上内容仅为本文档的试下载部分，为可阅读页数的一半内容。如要下载或阅读全文，请访问：<https://d.book118.com/537120016035006030>